

## Martin County's Boating Tradition Continues With The 34th Annual Stuart Boat Show

The *Stuart Boat Show* is located at three of the area's most popular marinas, Waterway Marina, The Allied Richard Bertram Marine Group Marina and Stuart Harbor, conveniently located just off Dixie Highway in Stuart, and will attract better than 12,000 visitors ready to buy your products and services.

The show provides abundant land and water space, with large and small boats in water and on land, every conceivable type of marine equipment and accessory, with loads of marine-related goods and services available.

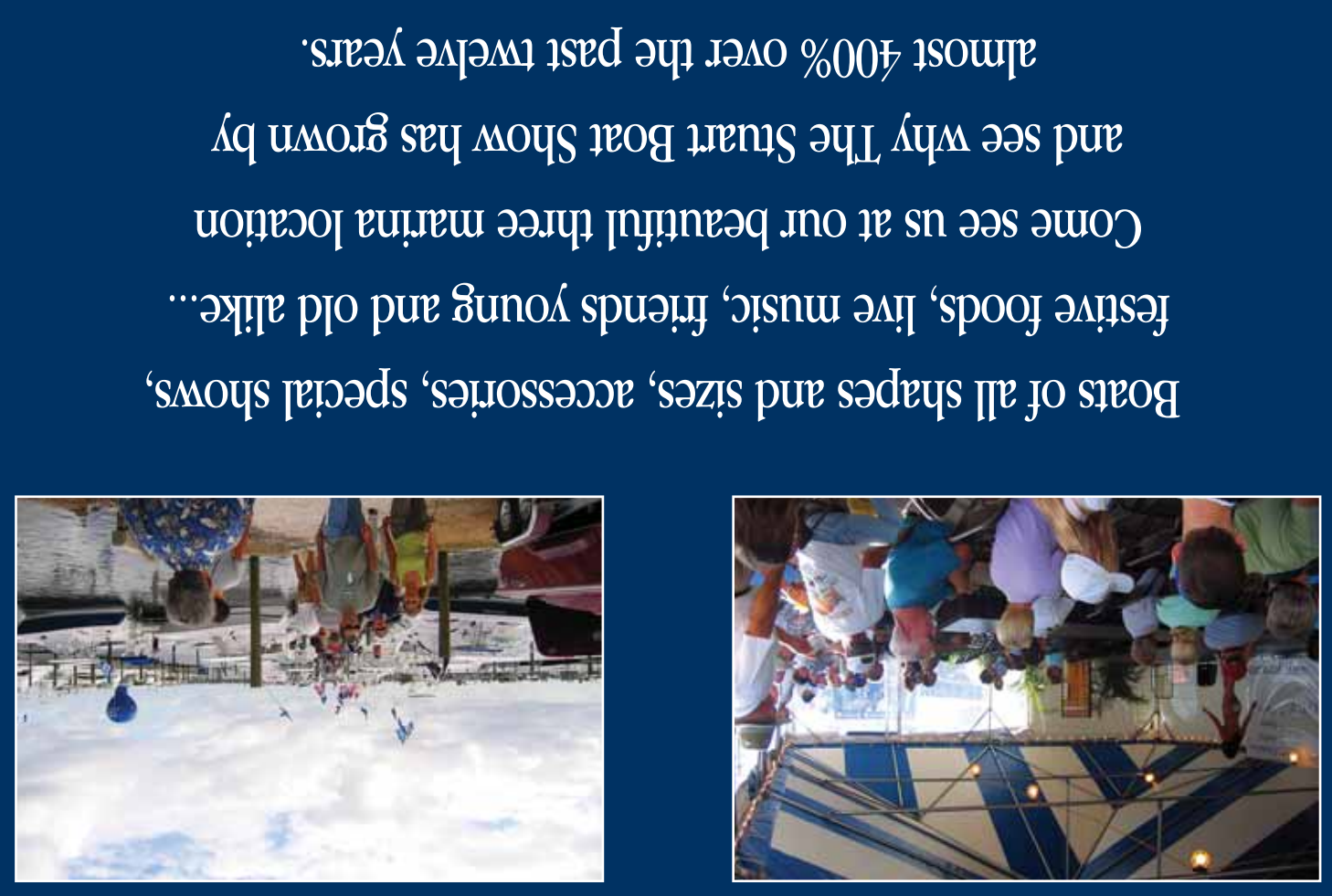
With the closure of a mile of SR707 (Old Dixie Highway) we create two main entrances for the show, including "Must See Displays" for all attendees, set against the magnificence of the St. Lucie River Lagoon.

In keeping with tradition, the *Stuart Boat Show* will feature motoryachts, trawlers, sportfish, as well as a variety of powerboats of all shapes and sizes both new and brokerage, demonstrations, special shows and festive foods. Free water-taxi service will be provided to and from downtown Stuart. This show has something for everyone! Come see why the *Stuart Boat Show* has grown by almost 400% over the past twelve years.

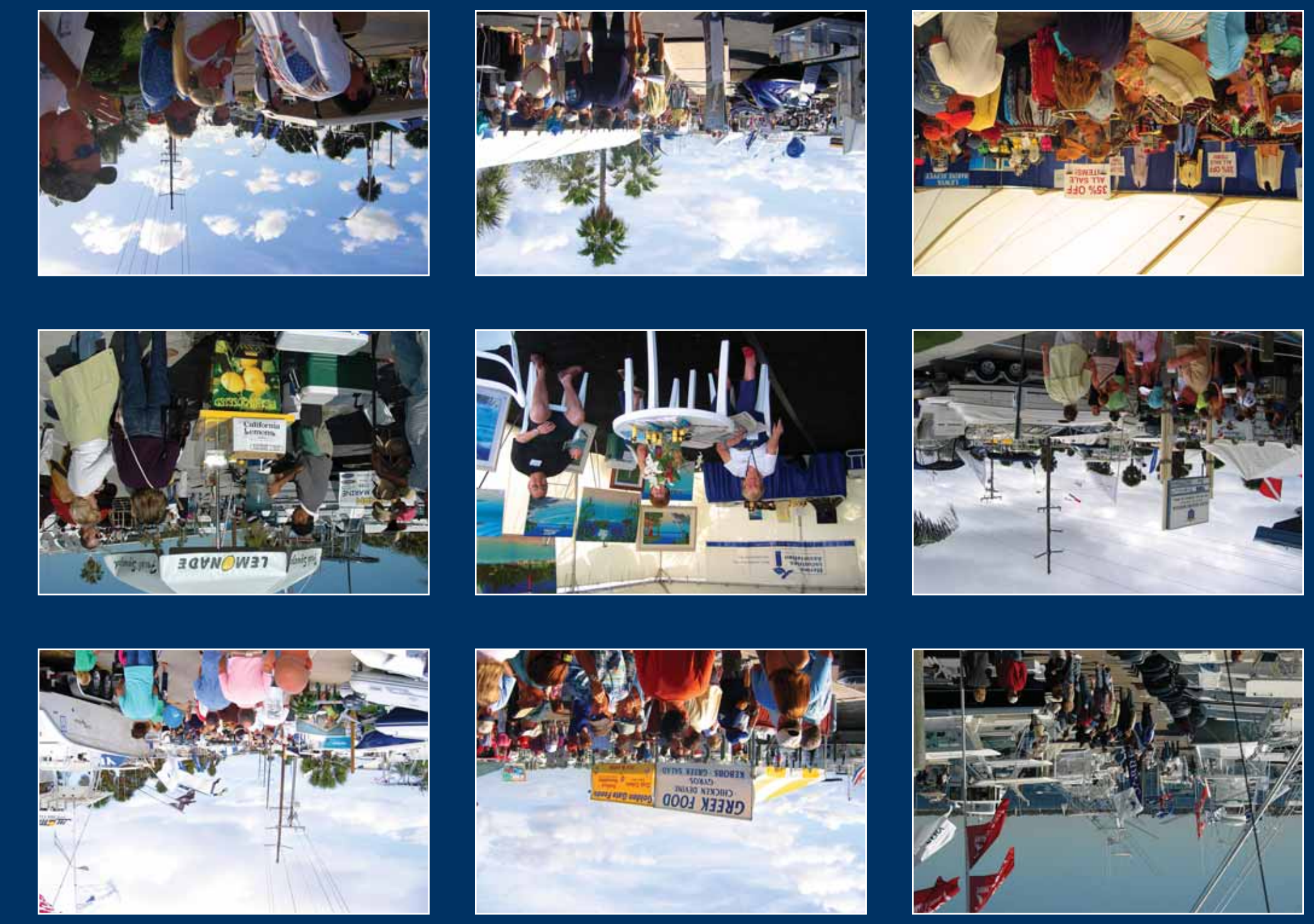
The *Stuart Boat Show* is owned by the Marine Industries Association of the Treasure Coast and is the Show to Support!



INSIDE PHOTOS: Tom Ryon • AllSports Productions, Inc. • 805 North Shore Drive • Miami Beach, FL • 33141 • 305-868-9224  
 AERIAL PHOTOS: Drew Wright • Wright's Aerials • 11585 U.S. Hwy 1, #311 • North Palm Beach, FL 33408 • 561-694-1711



Boats of all shapes and sizes, accessories, special shows, festive foods, live music, friends young and old alike... Come see us at our beautiful three marina location and see why The Stuart Boat Show has grown by almost 400% over the past twelve years.





**NORTH SHOW ENTRANCE**

**SOUTH SHOW ENTRANCE**

FERN ST

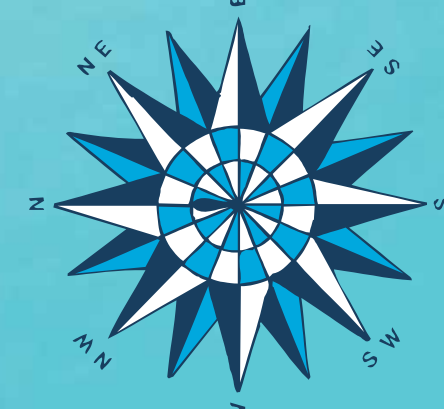
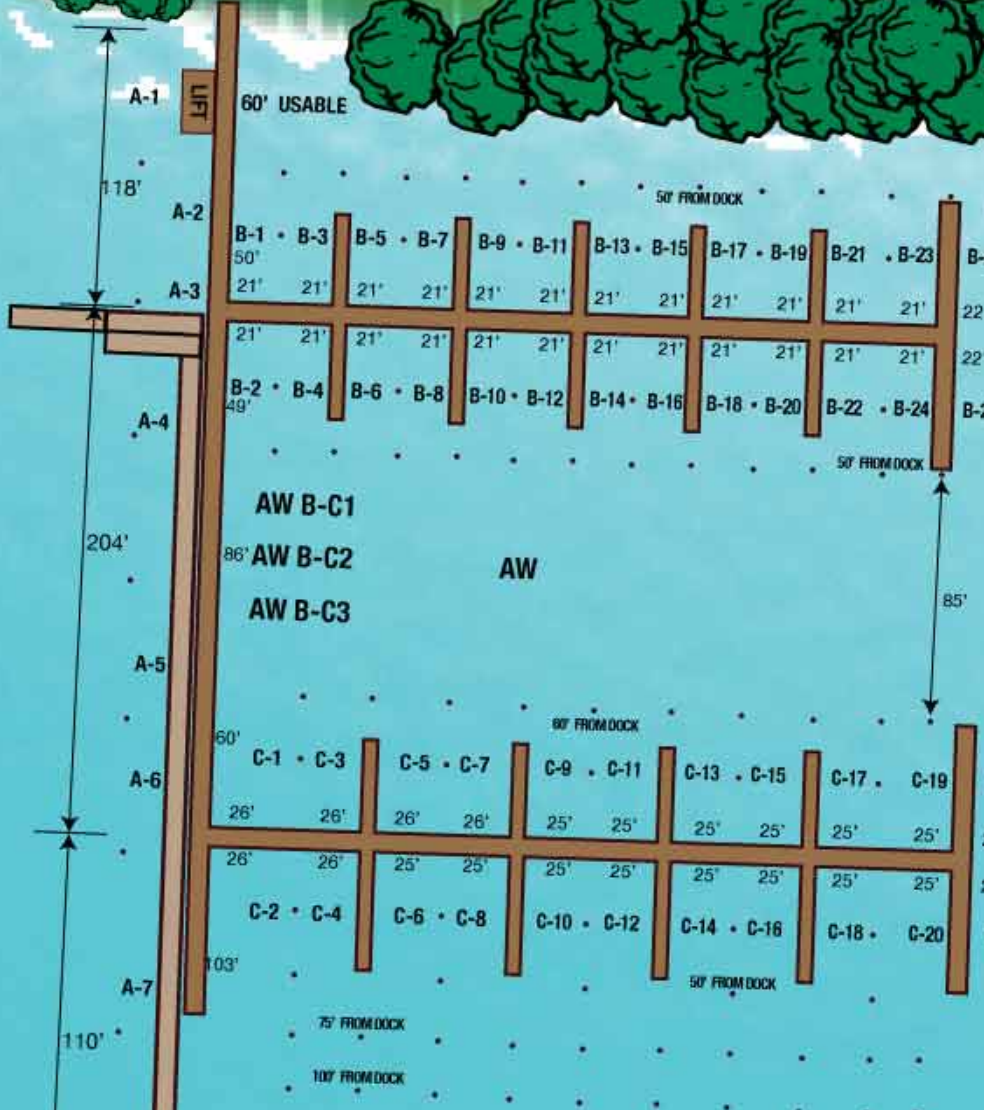
N RIVER DR

END OF ASPHALT PARKING LOT

STEEL POLE 758'

WOOD POLE 1360'

ON STREET 1473' TO THE SOUTH EDGE OF THE BLDG FROM POLE NORTH END



**LEGEND**

	UNUSABLE		FOOD
	IN-WATER SPACE		LAND SPACE
	FIRE RESCUE		WILL CALL
	AIR CONDITIONED HEADS		SHOW OFFICE
	BOOTH SPACE		TICKET BOOTH

**EXHIBITOR SPACE RATES**

SPACE	MEMBER	NON-MEMBER
Booth*	\$750.00	\$900.00
Land Display Outdoor	\$2.90 Sq'	\$3.30 Sq'
Water Display**†	\$3.00 Sq'	\$3.50 Sq'

\*BOOTH ELECTRICITY ADDITIONAL CHARGE: \$ 85.00  
 \*PREMIUM/CORNER BOOTH ADDITIONAL CHARGE: \$ 80.00  
 †Electrical (30 Amp Service) per Outlet \$90.00 (50 Amp Service) per Outlet \$100.00

**LAND SPACE SIZES**

W X D	SPACE	W X D	SPACE
10 x 15	AL16	50 x 35	SL7 - 17
20 x 10	KL7	60 x 25 + 20 x 25	AL9
15 x 15	KL10	40 x 50	AL13
25 x 10	AL3	50 x 40	KL6
30 x 10	AL4	50 x 45	AL1
25 x 15	AL17	45 x 50	AL14
50 x 10	AL2	45 x 15 x 90	KL1
27 x 20	KL3	100 x 35	SL3 - 6
20 x 27	KL4	55 x 90 x 50	KL2
40 x 15	AL18	100 x 40	SL2
30 x 22	KL5	85 x 45 + 22 x 40	AL15
80 x 10	AL12	125 x 45	SL1
65 x 20	AL11	100 x 75	AL8
33 x 25 / 20 x 25	AL10	100x75+25x25+20x10	AL5
70 x 20	AL19		

**HOURS:**  
 Friday, January 11th,  
 10:00am - 6:00pm  
 Saturday, January 12th,  
 10:00am - 6:00pm  
 Sunday, January 13th,  
 10:00am - 4:00pm

**WHERE:**  
 Waterway Marina  
 290 North Dixie Highway  
 The Allied Richard  
 Bertram Marine Group  
 110 North Dixie Highway  
 Stuart Harbor  
 54 North Dixie Highway  
 Stuart, Florida



For More Exhibit Information Call:  
 305-868-9224 or Fax: 305-866-2774  
 E-Mail: [StuartBoatShow@aol.com](mailto:StuartBoatShow@aol.com)

